

525± ACRE EAST RANCH  
LASALLE COUNTY

**DESCRIPTION:** This ranch is irregularly shaped with native rangeland and level to gently rolling terrain. The general flow of drainage is from south to north towards Cibolo Creek, situated just north of this ranch. The elevation ranges from a high of about 455' MSL in the far southeastern corner of the property, to a low of approximately 415' MSL at a low lying drainage way in the northeastern corner of the ranch. Soils on this ranch are comprised of Brystal, Duval and Poteet soils which consist of very fine sandy loam. Approximately 80 percent of this ranch is in virgin South Texas brush, with large mesquite, elm, hackberry and oak trees. The remaining vegetation is diverse and dense with a high canopy.

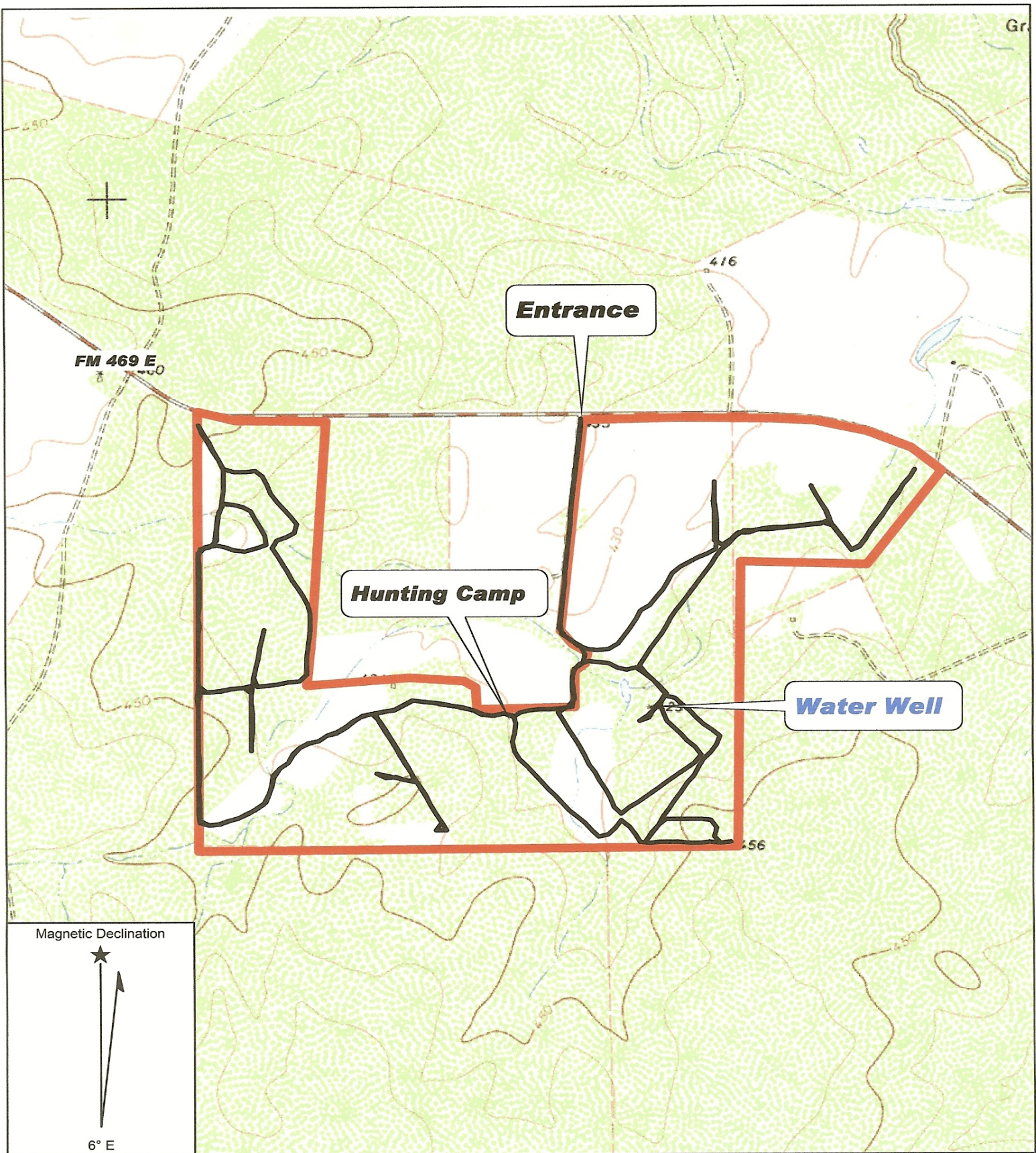
**COMMENTS:** This ranch has been owned by the same family since the 1970's. It is perimeter fenced with a mixture of 8' net wire game proof fencing and typical five strand barbed wire. Domestic water is supplied by one water well equipped with an electrical submersible pump with a concrete water trough. Surface water is provided by one earthen stock tank. This ranch is surrounded by large acreage neighbors, has excellent brush and wildlife habitat, so it won't be around long!

The owners will consider conveying a portion of the mineral interest.

**LOCATION:** This ranch is located in the center of the South Texas red sandy country, approximately half-way between Dilley and Cotulla, Texas, along the south side of FM 469. Travel south on IH-35 from San Antonio towards Laredo, take the Number 77 exit, which is FM 469 (Millett), go east (to the left) and travel approximately 9 miles to the entrance gate.

# Location Map





Name: BURNS RANCH  
Date: 6/2/2008  
Scale: 1 inch equals 1333 feet

Location: 028° 31' 46.59" N 099° 04' 11.38" W NAD27  
Caption: Topographical Map - for the 525.00 Acre East Ranch

**FM 469 E**

**Entrance**

**Hunting Camp**

**Water Well**

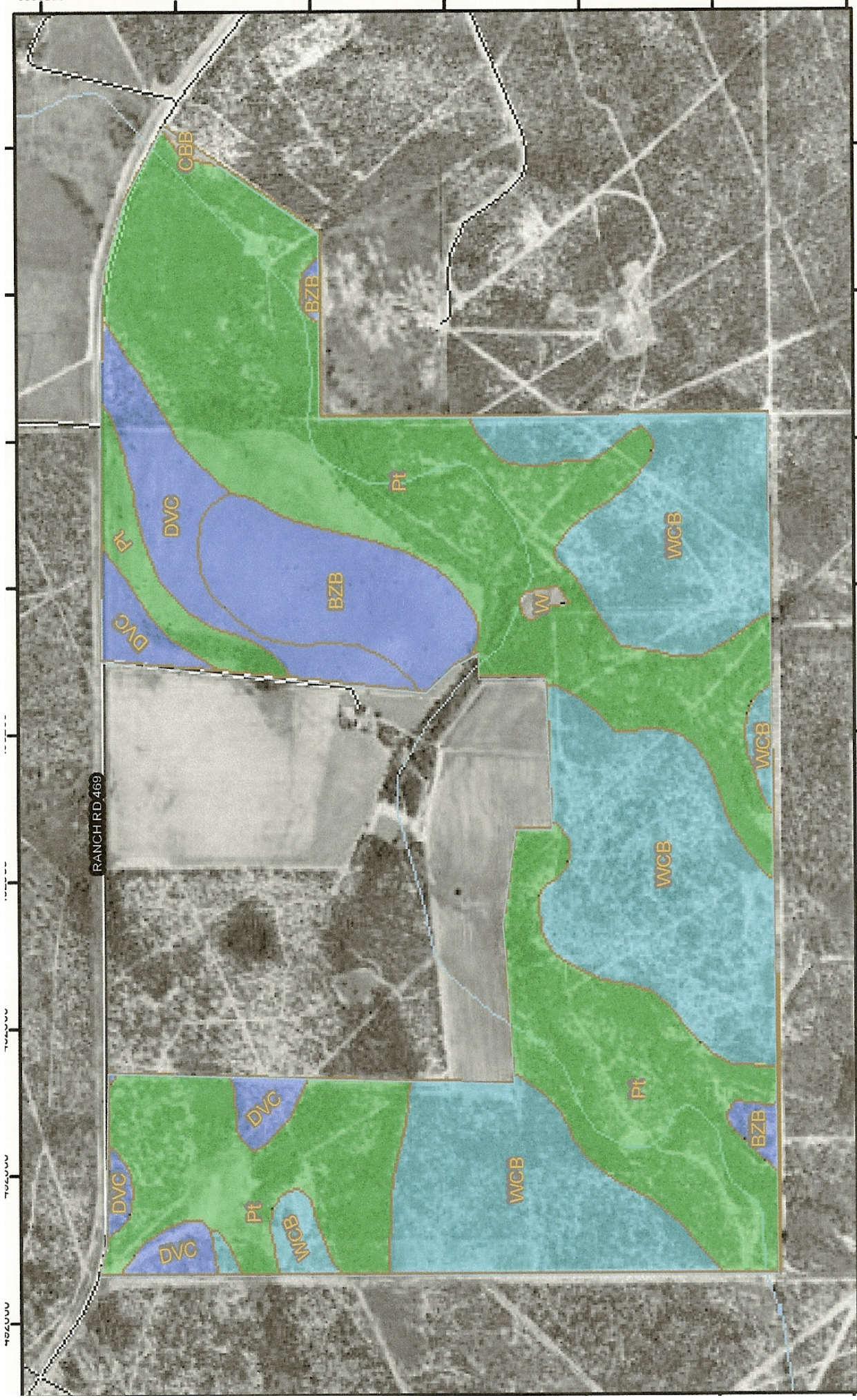
Magnetic Declination



6° E

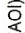

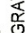

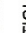
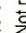
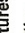
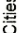

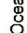
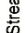
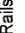

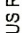
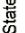
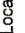

Name: BURNS RANCH SW, TX  
Date: 6/2/2008  
Scale: 1 inch equals 1250 feet

Location: 028° 31' 46.69" N 099° 04' 09.89" W NAD27  
Caption: Aerial Map - for the 525.00 Acre East Ranch



Web Soil Survey 2.0  
National Cooperative Soil Survey

## MAP LEGEND

<b>Area of Interest (AOI)</b>	
	Area of Interest (AOI)
<b>Soils</b>	
	Soil Map Units
<b>Soil Ratings</b>	
	GRAY SANDY LOAM PE 19-31
	RAMADERO PE 19-31
	SANDY LOAM PE 19-31
	TIGHT SANDY LOAM PE 19-31
	Not rated or not available
<b>Political Features</b>	
<b>Municipalities</b>	
	Cities
	Urban Areas
<b>Water Features</b>	
	Oceans
	Streams and Canals
<b>Transportation</b>	
	Rails
<b>Roads</b>	
	Interstate Highways
	US Routes
	State Highways
	Local Roads
	Other Roads

## MAP INFORMATION

Original soil survey map sheets were prepared at publication scale. Viewing scale and printing scale, however, may vary from the original. Please rely on the bar scale on each map sheet for proper map measurements.

Source of Map: Natural Resources Conservation Service  
Web Soil Survey URL: <http://websoilsurvey.nrcs.usda.gov>  
Coordinate System: UTM Zone 14N

This product is generated from the USDA-NRCS certified data as of the version date(s) listed below.

Soil Survey Area: La Salle County, Texas  
Survey Area Data: Version 7, Jan 3, 2007

Date(s) aerial images were photographed: 1/14/1995

The orthophoto or other base map on which the soil lines were compiled and digitized probably differs from the background imagery displayed on these maps. As a result, some minor shifting of map unit boundaries may be evident.



TYPICAL NATIVE VEGETATION

TYPICAL RANCH ROAD





TYPICAL NATIVE VEGETATION

TYPICAL NATIVE VEGETATION





VIEW OF SENDERO

VIEW OF NATIVE VEGETATION





TYPICAL NATIVE VEGETATION

TYPICAL NATIVE VEGETATION





TYPICAL NATIVE VEGETATION

TYPICAL NATIVE VEGETATION





VIEW OF WATER WELL

VIEW OF WATER TROUGH



